



- Shop All
- Rings
- Necklaces
- Earrings
- Bracelets
- Bands
- CVD Rings
- Our Story
- Guides
- Our Blogs

Home News How to Choose the Perfect Wedding Ring for Fall and Winter Weddings

Sep 26, 2024 — Digital Nomads

How to Choose the Perfect Wedding Ring for Fall and Winter Weddings

Share: Facebook Twitter Instagram



A crucial first step in celebrating your special tale is choosing the ideal wedding rings as you go off on the path of love and dedication. Every couple, in our opinion at Silver Ninety Nine, should have a ring that exquisitely captures their relationship and the magical events that drew them together. Our magnificent collection, which features wonderful designs inspired by the spectacular power of both seasons, perfectly captures the romantic spirit of winter and fall.

Your ring will not only match your wedding day but also speak to your common memories because each item is carefully designed to capture both the comfort of winter's chill or the warmth of autumn's embrace. Look among our carefully chosen assortment to find the ideal ring that truly speaks to you.

Selecting Rings that Go Well with Fall and Winter Weddings with Seasonal Elegance

Choosing a wedding ring that resonates with your engagement location adds a profound layer of romance from silver ninety nine. Imagine a proposal under a canopy of golden leaves, where the vibrant colors of fall inspire the design of your ring. Consider warm metals, such as rose gold, which reflect the cozy atmosphere of your surroundings. Picture the two of you surrounded by nature's beauty, with each element symbolizing your love story.

For winter engagements, envision a snowy backdrop like a diamond. Your chosen piece could incorporate icy blue sapphires or brilliant white diamonds that mimic the sparkling landscape. Rings adorned with delicate details, reminiscent of swirling snowflakes or intricate frost patterns, can beautifully capture this enchanting moment.

Reflect on how your ring can connect to the memories tied to that special place. If your proposal occurred in a charming vineyard, a vintage-inspired piece with rich gemstones may embody that romantic setting. Alternatively, if you are near a lake, consider a design that incorporates flowing lines, echoing the serene waters. By selecting a ring that harmonizes with both your journey and the captivating beauty of your engagement site, you create a timeless symbol of your love that you will cherish forever. Also look at wedding bands that complement the autumnal and winter mood and natural beauty of weddings.

A Ring That Tells Your Love Journey: Grab Customizable Rings

Since every love story is different, the ring you select should capture the spirit of your relationship. Picture the scene: beautiful grapevines, the warm light of the sunset sun, and your vows uttered in a lovely vineyard. This gorgeous background might serve as inspiration for your ring's design. Some ideas include graceful vines or rich, deep colors that bring to mind the allure of your engagement site.

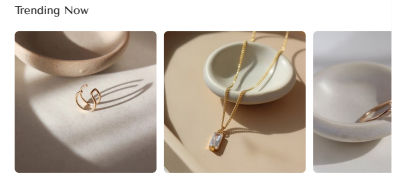
A ring that encapsulates the allure of that peaceful moment should be taken into consideration by couples who accepted a winter proposal in a lovely cottage tucked away in the snow. Cold White sapphires or stunning diamonds can be used to replicate the shimmering scenery, connecting you to the peace you shared. This feeling may be strengthened by designs with tiny snowflake patterns, making your love a reminder to yourself.

Beyond jewels and patterns, personalization may involve carvings that evoke priceless memories associated with a particular location. Your ring may become a special remembrance by adding a special date, a quotation you love, or even the coordinates of where you were at your engagement.

Choose a piece that effortlessly integrates the beauty of your engagement background with your love story to create an everlasting symbol that honors the events that brought you together and reveals the essence of your relationship. Some warm, inviting looks during the cooler months are ideal for metals like rose gold and yellow gold.

Have a Look at Our Charming Wedding Rings for Every Season

Find timeless ring designs that are elegant for weddings in the fall and the winter, guaranteeing a timeless look. Finding the ideal ring that conveys your special love tale is the first step in



- 0.5 Diameter Double Wrap Ear Cuff Earring. ₩138,000
- 1 CT Cubic Zirconia 18 Inch Long Sterling Silver Euphoria Necklace. ₩138,000
- 1 CT Herkime Solitaire. ₩138,000

Customer Support just now

Hi! How can we help?



starting your wedding adventure. You're sure to find something truly extraordinary from our excellent selection, which includes magnificent items that are created to capture the soul of each season. Look into getting a ring that accentuates the alluring charm of the place where you got engaged, bringing even more significance to your priceless moments.

You may peruse our selection, which features a variety of designs, from classic solitaires to elaborate antique patterns, so you can discover the ideal fit for your love and personality. Consider how the artwork you have selected shall convey both your dedication and the attractive setting in which your adventure first began. Browse our endearing collection to find the ring that perfectly complements your relationship's landmarks and love tale. Your ring is a timeless treasure that you should keep through all seasons for it will remind you, every time you gaze at it, of the magic and romance that characterize your connection.

Rings that Capture the Pleasant Romantic Essence of Winter and Autumn

Consider how the beauty of your engagement site may influence your decision when choosing a wedding band. Imagine this: an autumnal proposal within the dazzling hues of falling leaves, the world turning into a warm palette of rose, gold, and white. Rich gemstones, such as highly cut diamonds, can perfectly capture this seasonal charm in your ring and serve as a reminder of the beautiful setting that surrounds your essential event. Think of sophisticated patterns with leaf engravings that link your love tale to the lovely spot you've visited.

Choosing a ring that captures the spirit of the location of your engagement helps to create a lasting souvenir of your special adventure. You will always be reminded of the joy you shared in that special moment as you glance at your ring, marking the romance of your passionate adventure.

FAQ

How can I pick a ring that goes well with the wedding's season?

Consider the hues and materials that correspond with the particular season. Winter rings may have ice hues and exquisite detailing, while autumn rings frequently have warm tones and patterns inspired by nature.

Is it possible to customize my wedding band to match the place of my engagement?

Of course! Your ring may become a one-of-a-kind representation of your love tale by adding details like engravings, particular gemstones, or themes that bring back memories to identify your proposal.

Which kinds of metal are ideal for winter and fall rings?

While platinum or white gold may accentuate the cold elegance of winter rings, warm metals like rose gold and yellow gold blend well with the comforting autumnal emotions.

Are there particular looks that perfectly embody the spirit of winter or fall?

Indeed! While winter designs might incorporate snowflake patterns or delicate, turning components that evoke the splendor of falling snow, autumn fashions may feature flower or leaf themes.

How can I take care of my wedding band to maintain its beauty all year round?

To be sure that the settings stay secure, especially after seasonal events, clean your ring on a regular basis using a mild cleaning solution, keep it away from strong chemicals, and have it professionally inspected.

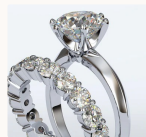
When choosing a ring for an outdoor fall or winter wedding, what factors should I take into account?

To avoid pain in colder weather, choose a ring that can tolerate external conditions and make sure it fits efficiently.

[Continue reading](#)

Which Order Do You Wear Engagement Wedding and Eternity Rings

[Read more >](#)



Silver Mindywine

We blend timeless elegance with uncompromising quality to create silver jewelry that speaks to your unique style.



Our Company

[Our Story](#)
[Privacy policy](#)
[Shipping policy](#)
[Terms Of Service](#)
[Return & Refund Policy](#)

Customer Care

[Email Us](#)
[Live Chat](#)
[FAQ's](#)
[Contact Us](#)

Guide

[Modification](#)
[Ring Size](#)
[Jewelry Care Guide](#)

Contact Hours

Monday - Friday
9:00 a.m. - 6:00 p.m. EST

For further information, please contact our customer service team.

English ▼ 🇰🇷 South Korea (KRW) ▼



© 2024 Silver Luxury Goods LLC. All rights reserved.